



Super English

Level 3 - Unit 13

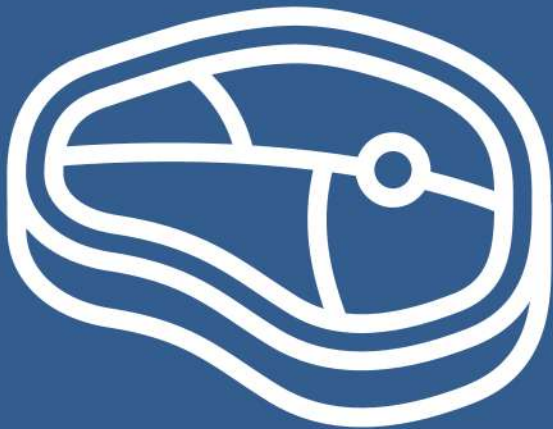
Food - 1





Vocabulary

beef



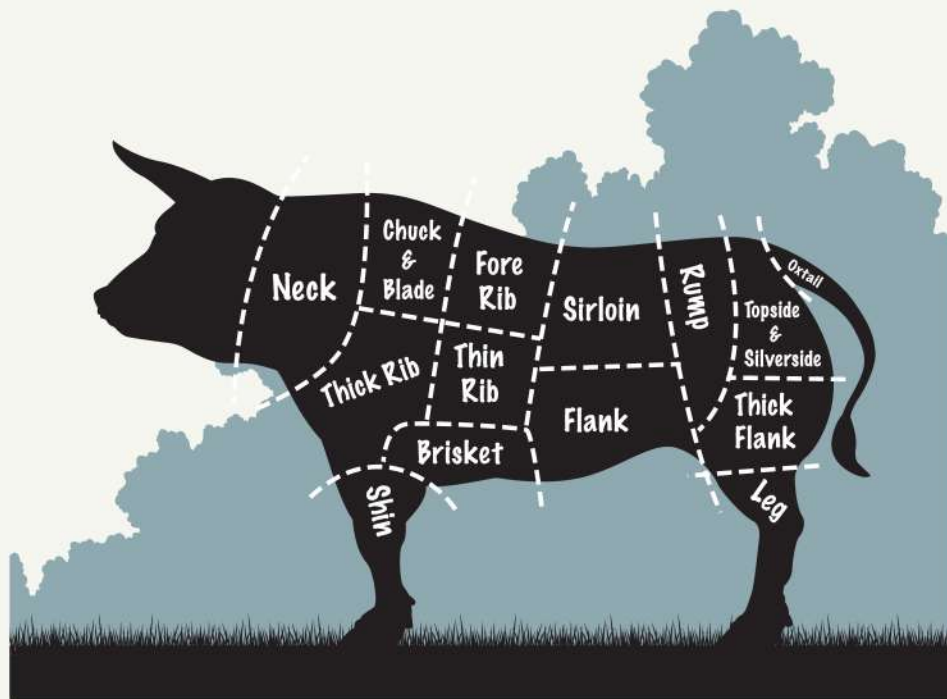
Beef is meat
that comes
from a cow.



He often eats
beef for
dinner.



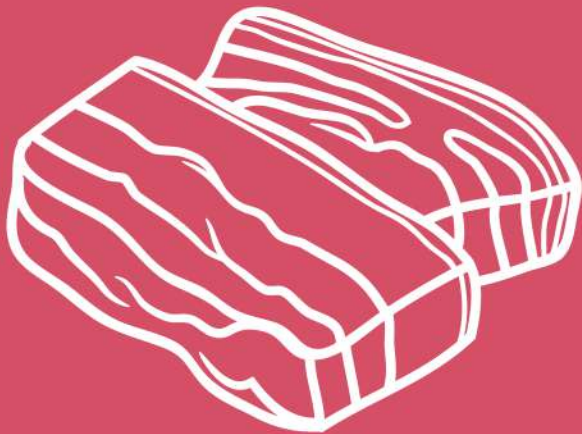
Where does
beef come
from?



What meat
is he
eating?



pork



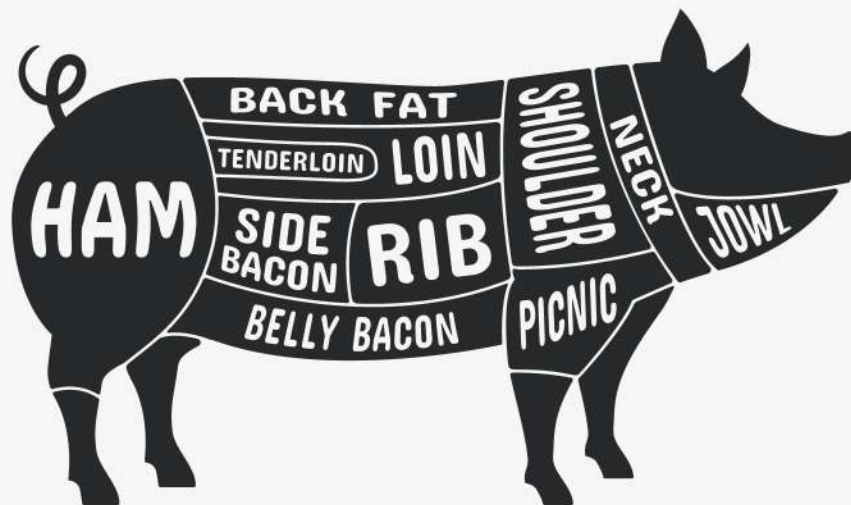
Pork is meat
that comes
from a pig.



She sometimes
eats **pork** for
breakfast.



Where does
pork come
from?



What meat
is she
eating?



butcher



A butcher
cuts meat
and sells it.



A butcher
works in a
butcher shop.



What does
a butcher
do?



Who was
cutting beef
yesterday?



Grammar



Possessive adjectives

subject

possessive



I	→	my
you	→	your
he	→	his
she	→	her
it	→	its
we	→	our
they	→	their



Let's practice: me/my



This is ____ ball.



Will you play with ____?



Phonics

Long i



ild

child

Long i



ind

find

Read the rhyme!

Tom is a boy, he is so kind,

He has a smart, and happy mind.

He likes to see animals, in the wild,

On days when the weather, is so mild.





Reading

At the Butcher Shop

Ms. Kim is a butcher. Every day, she cuts meat and sells it to people. Her shop is busy. Many people come to buy meat.



At the Butcher Shop

First, a pilot comes in. "Hello, Ms. Kim! I want some pork, please," he says.

Ms. Kim cuts a piece of pork and wraps it in paper. "Here you go!" she says.



At the Butcher Shop

Next, a scientist walks in. "Good morning! I need some beef for dinner," he says.

Ms. Kim smiles. "Of course!" She cuts some beef and gives it to him.



Super English

See you
Next time!

