

Super English

Level 4 - Unit 4
Jobs - Lesson 4



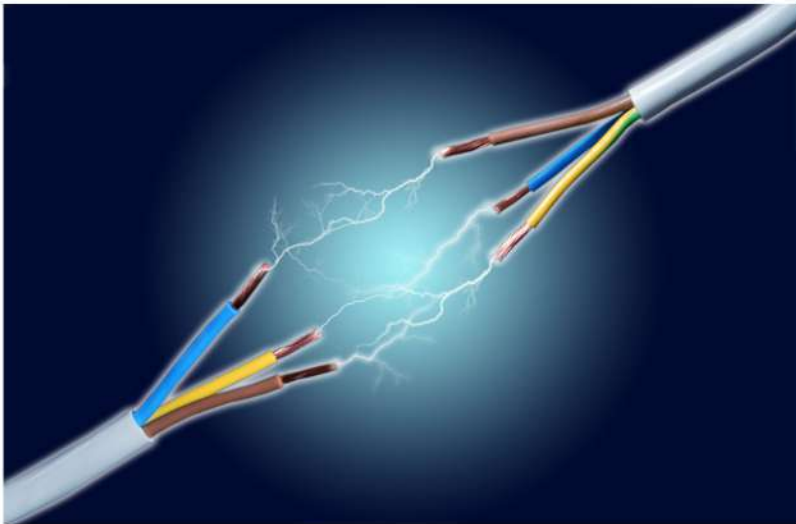
Vocabulary



Jobs - Vocabulary



electricity: a type of energy that makes electrical things work (noun)



When you turn on the light, you are using **electricity**.

Jobs - Vocabulary



install: to put something new in a place so it can be used (verb)

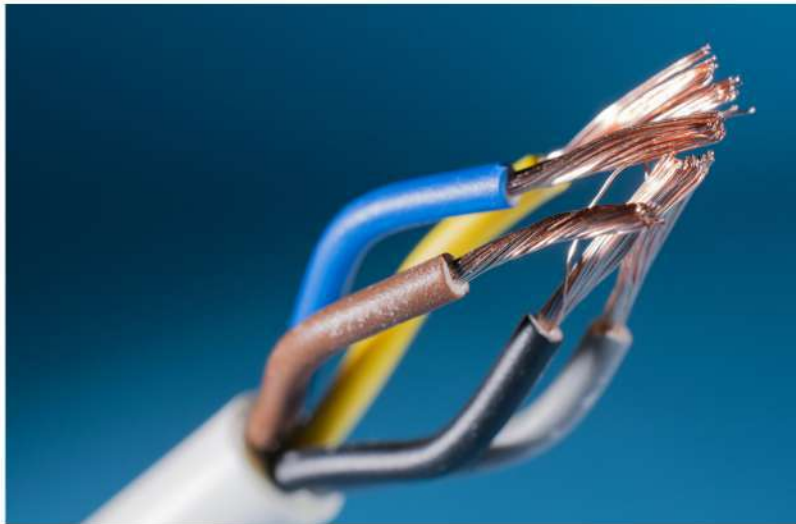


The plumber **installed** a new sink in the house.

Jobs - Vocabulary



wire: A long, thin piece of metal that carries electricity from one place to another (noun)



There were many **wires** at the top of the poles.

Jobs - Vocabulary



outlet: A place on the wall where you can plug in a cord to get electricity (noun)



You can charge your phone by plugging it into the **outlet**.

Let's Read!



Jobs - Electrician



Jack owns an electrician shop. He has ten electricians that work for him. Electricians make sure electricity is safe in buildings and homes. They install new wires and fix problems with electricity.



Jack goes to the shop early in the morning. He looks at the schedule and sends each electrician out to help customers. Jack and his workers grab their equipment and leave the shop.

Jobs - Electrician



One of the jobs was to install new **outlets** in a house. The electrician cut the wires and connected them to the outlets. He is very careful because electricity can be dangerous.

Jobs - Electrician



Some other workers had the job of installing light fixtures for a customer. They used ladders to reach up to the ceiling. They connected the wires to the lights and put them in the ceiling.

Jobs - Electrician



Jack and two of his workers went to a big construction site to put wires in a new building. He worked with other electricians to install all the wires and make sure everything was working well.

Let's do Grammar!

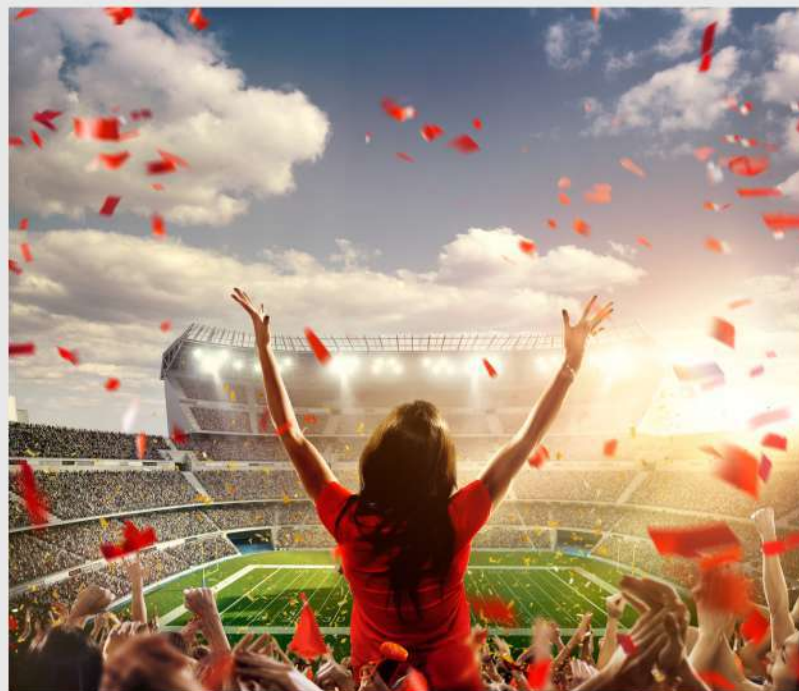


During or while

While always has a **verb** after it, but during doesn't.

They cheered **while**
watching the game.

They cheered **during**
the game.



Phonics

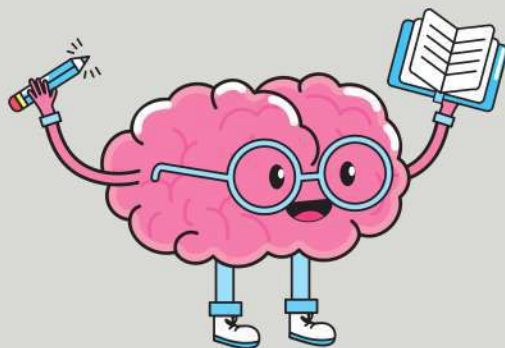


Hard and Soft 'c'

When **g** is followed by **e**, **i**, or **y**, it usually makes the /j/ sound as in **giraffe**.

Soft G

gym
a**g**e
gentle
giant
hu**g**e
an**g**el



Hard G

game
gate
gobble
glow
green
gain



Super English

See you
Next time!

