



Super English

Level 3 - Unit 17

My City - 2





Vocabulary

station



Stations are places people go to do things.



train station



bus station



police station



fire station

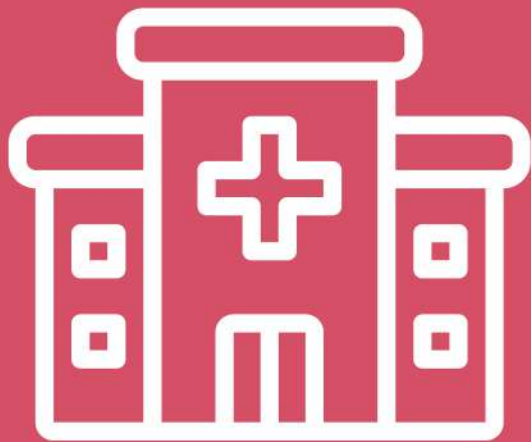
Who works
at a police
station?



Where did the
firefighter go
yesterday?



hospital



Doctors and
nurses work
at a **hospital**.



You go to the
hospital when
you are sick.



Where did
he go
yesterday?



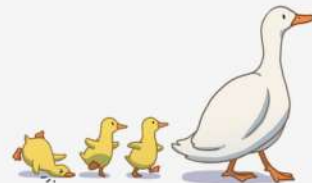
Where do
you go when
you are hurt?



follow



The baby
ducks **follow**
their mom.



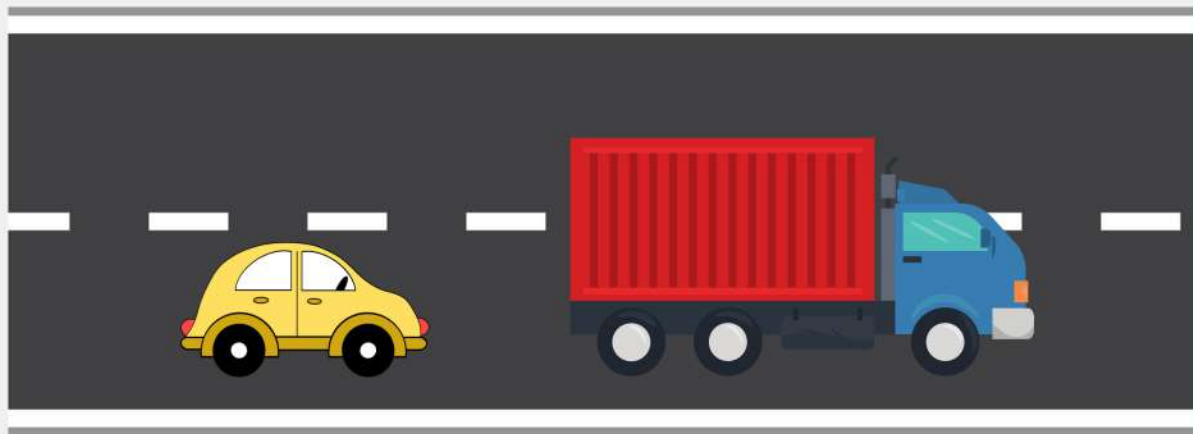
The dog
followed the
boy yesterday.



Who are the
students
following?



What is
the car
doing?



Grammar



Simple Past Tense Verbs

What **do** you **see** every day?
I **see** the my dog every day.



What **are** you **seeing** now?
I **am seeing** the moon now.



What **did** you **see** yesterday?
I **saw** some birds yesterday.



Simple Past Tense Verbs

What **did** you **see** yesterday?



What **did** you **see** 2 days ago?



What **did** you **see** last night?





Phonics

'zher' sound



sure

measure

Read the rhyme!

He looks at the map, takes a measure,

He wants to find, the hidden treasure.

No rush, no fuss, and no pressure,

Finding it soon will be a pleasure!





Reading

Ben and Max's City Walk

Ben is going to see his friend Max today. They meet every week and do things together.



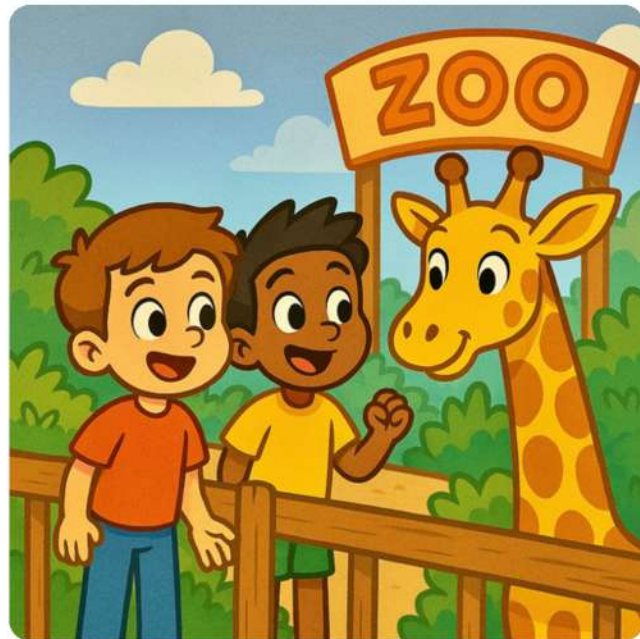
Ben and Max's City Walk

2 weeks ago, Ben and Max went to the park and played all day. The weather was sunny and hot. They had a lot of fun that day.



Ben and Max's City Walk

Last week, they went to the zoo.
They saw many animals and ate some
yummy food. The weather was a
little cloudy and cool, but nice.



Super English

See you
Next time!

