

# Super English

Level 2 - Unit 2  
Pronouns - Lesson 2



he = a boy



she = a girl



# VOCABULARY



# see





What do you  
**see?**

I **see** my  
home.



I **see** you!



Oh!



He is a  
boy.



he = a boy



Where does  
**he** go?



**He** goes to school.

Who is **he**  
with?



**He** is with his mom  
and dad.



She is  
a girl.



she = a girl



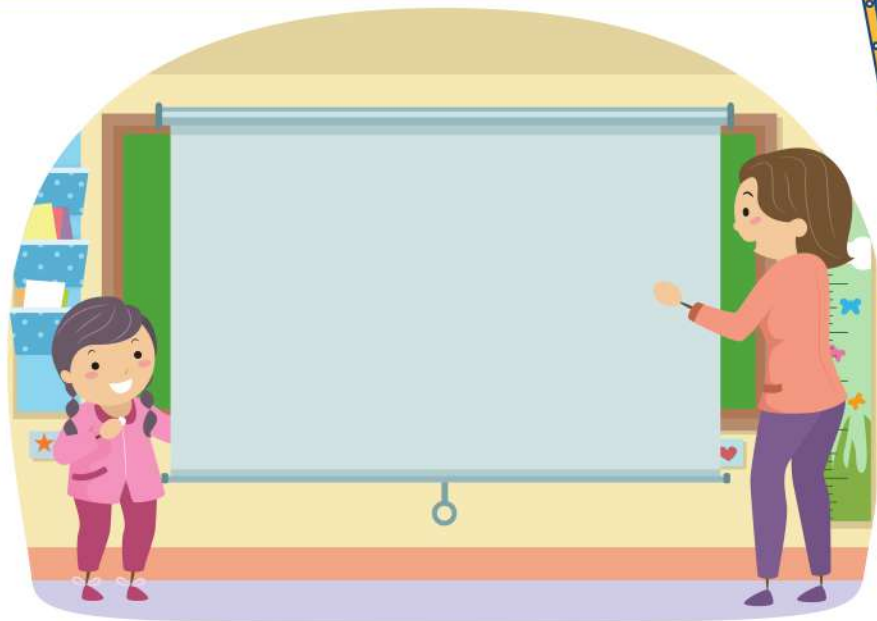
Where does  
**she** go?



**She** goes home.



Who is **she**  
with?



**She** is with her  
teacher.





# PHONICS



# Short Ee

e + t = et

j + et = jet



1.



**jet**

2.



**net**

3.



**wet**

4.



**pet**

# Read the rhyme!

**A wet pet,  
And ten eggs in a net.  
In a web they met,  
And a vet in a jet.**



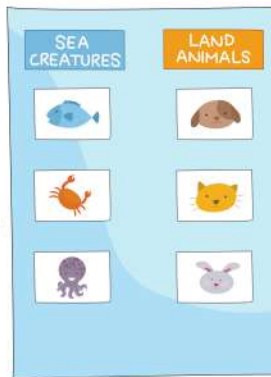
# Super English

See you  
Next time!





# Flashcards



et



\_\_et

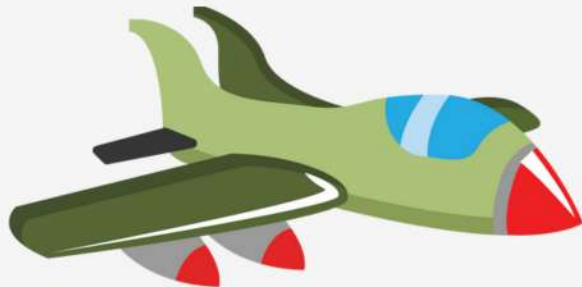


et



\_\_et

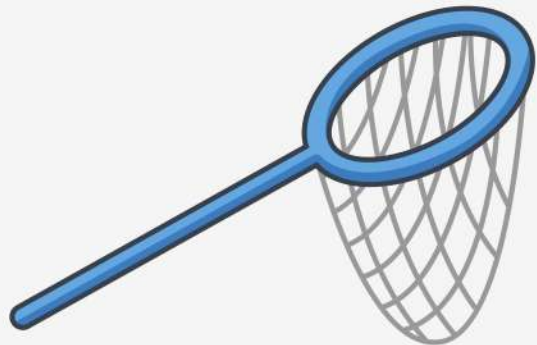
et



jet

Super  
English

et

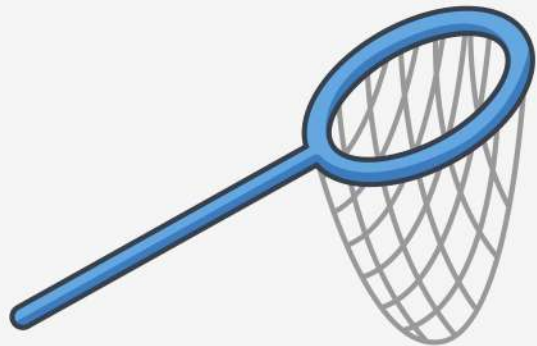


\_\_et



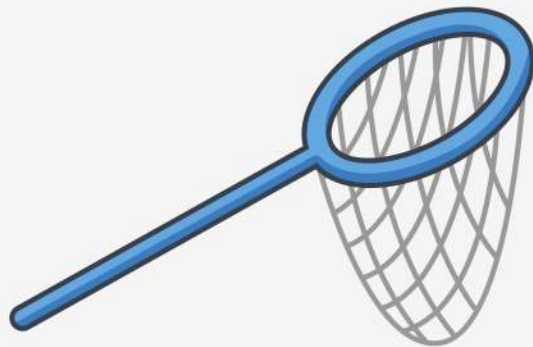


et



\_\_et

et



net

Super  
English

et



\_\_et



et



\_\_et

et



wet

Super  
English

et



\_\_et





et



\_\_et



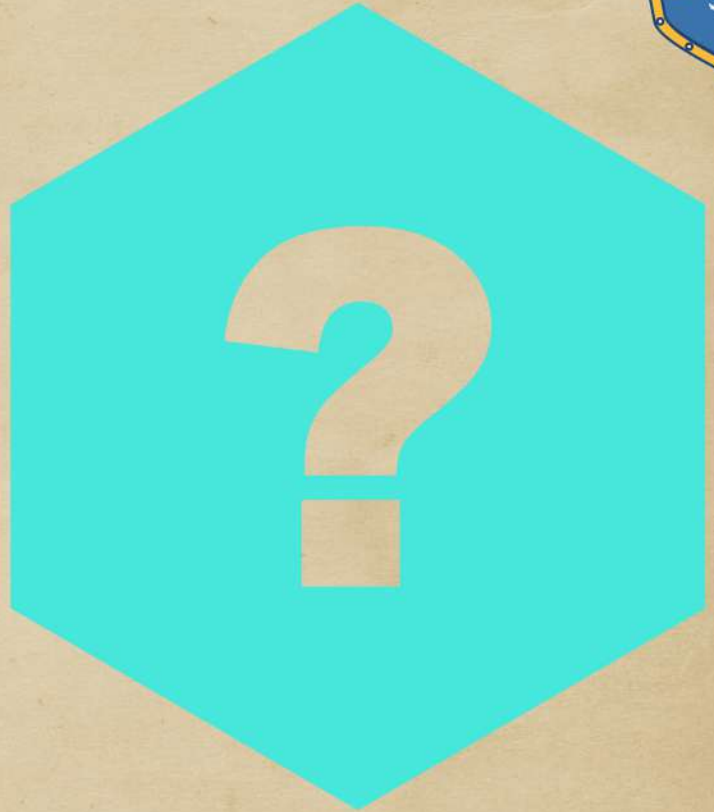
et



pet



\_\_\_\_\_





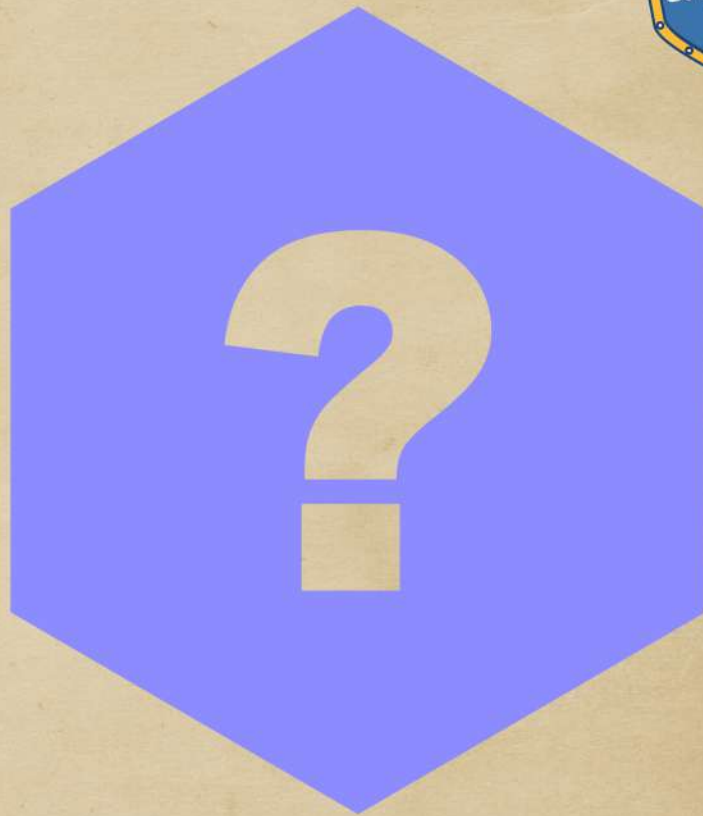
\_\_\_\_\_



see



\_\_\_\_\_







\_\_\_\_\_



Where?

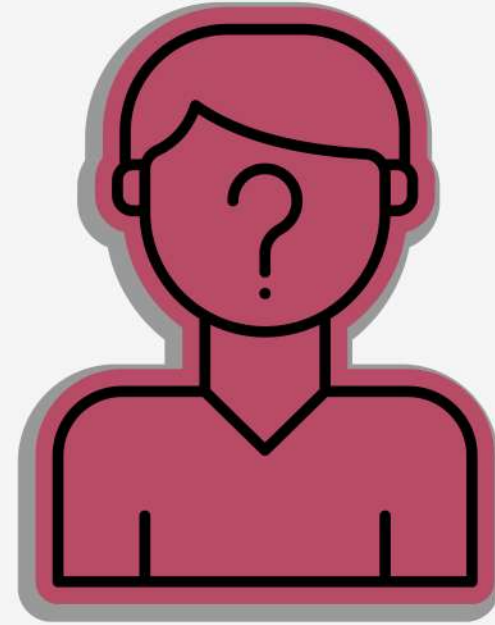


\_\_\_\_\_

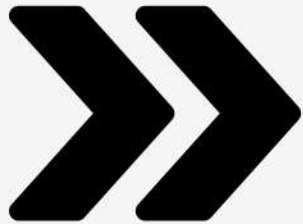




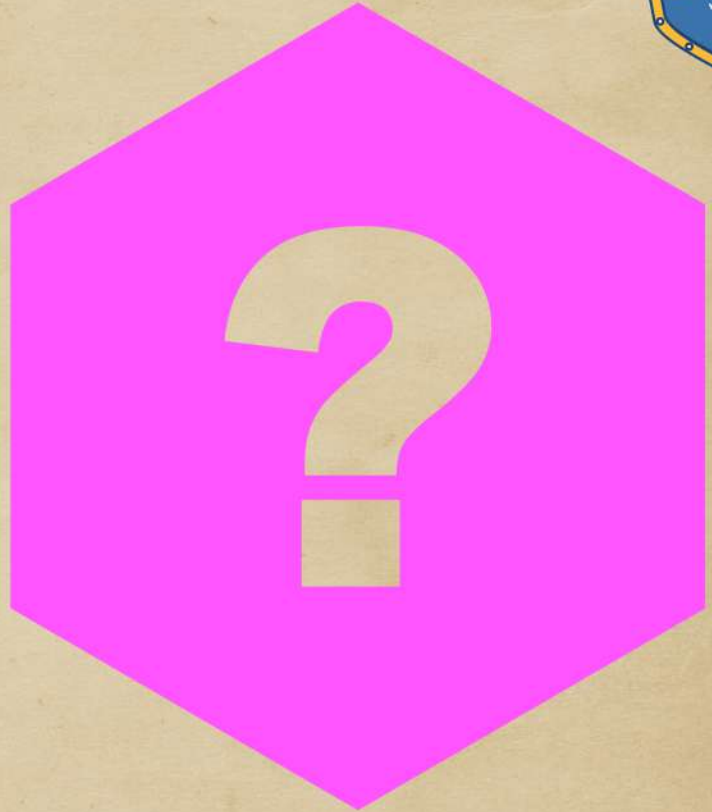
\_\_\_\_\_



Who?



\_\_\_\_\_



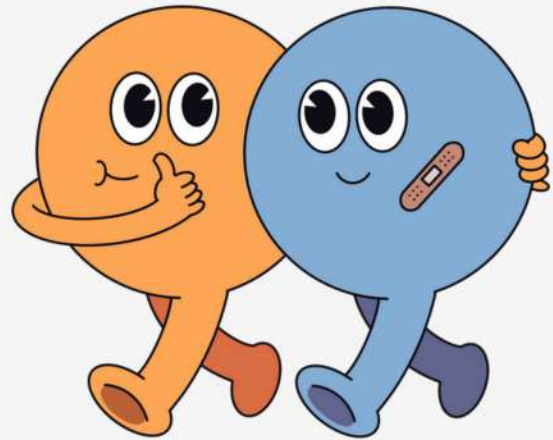




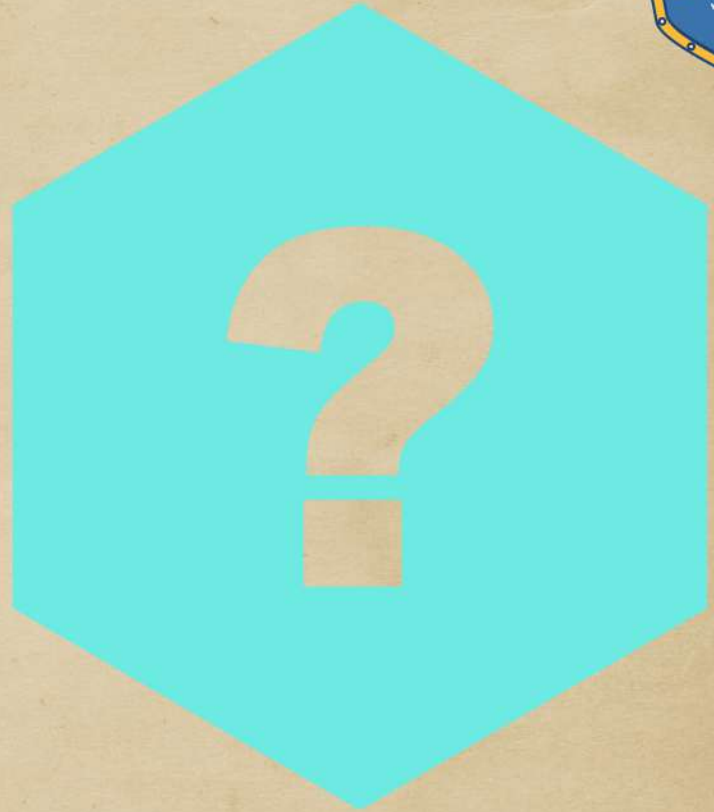
\_\_\_\_\_

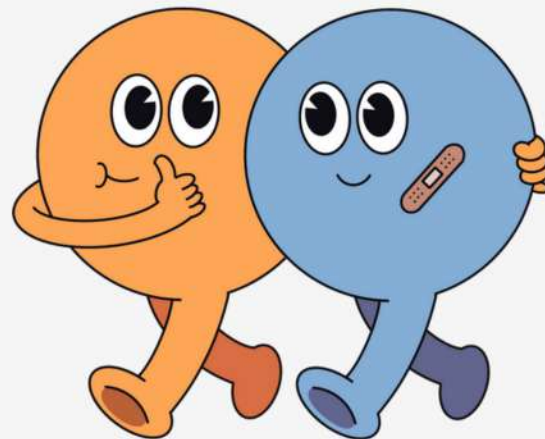
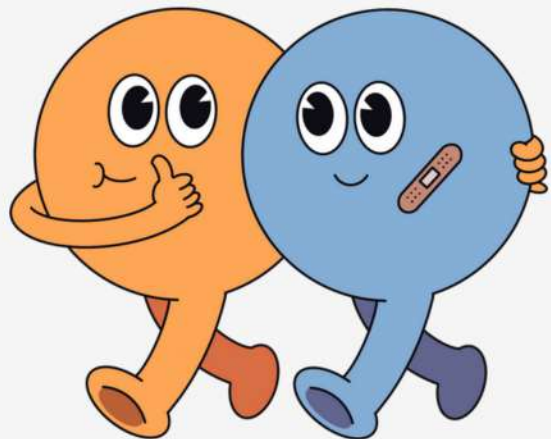


go



\_\_\_\_\_





with





