



# Super English

Level 2 - Unit 13  
Transport - Lesson 1





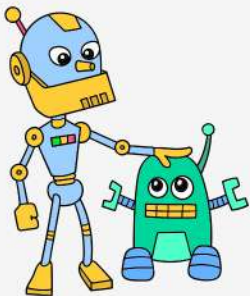
# Vocabulary





big

small



Is a tree  
big or  
small?



A tree is **big/small**.

Is a frog  
big or  
small?

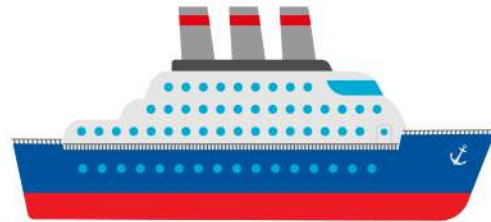


A \_\_\_\_\_ is big/small.

ships



a ship



Is the ship  
big or  
small?



The \_\_\_\_\_ is very \_\_\_\_\_.

What are  
they going  
to?



They \_\_\_\_\_ to a \_\_\_\_\_.







**a boat**

**boats**



What is in  
the boat?



A \_\_\_\_\_ and a \_\_\_\_\_ are in the \_\_\_\_\_.



Is the boat  
small or big?  
And the ship?



The \_\_\_\_\_ is \_\_\_\_\_.

# Read the rhyme!

Big ship, big ship, on the sea,  
Small boat, small boat, just for me.

See them go, big and small,  
Big ship, small boat, fun for all!



# PHONICS

# Long Oo



oo

coat

1.



**coat**

2.



**boat**

3.



**soap**

4.



**road**

# Read the rhyme!

Goat in a coat, on the road so long,

Sings a tune, hums a song.

Finds a boat, sails along,

Goat in a coat, where he belongs!





# Read the rhyme!

Boat on the moat, floats so light,

Goat wears a coat, holding tight.

See the road from our sight,

Happy day, into the night!



# Super English

See you  
Next time!



oa



\_oa\_



oa



\_oa\_

oa



coat

oa



\_oa\_



oa



\_oa\_



oa



boat

oa



\_oa\_



oa



\_oa\_

oa



soap



oa



\_oa\_



oa



\_oa\_

oa



road





\_\_\_\_\_

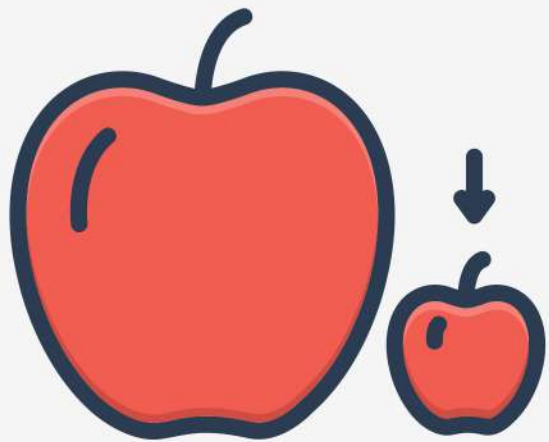




\_\_\_\_\_

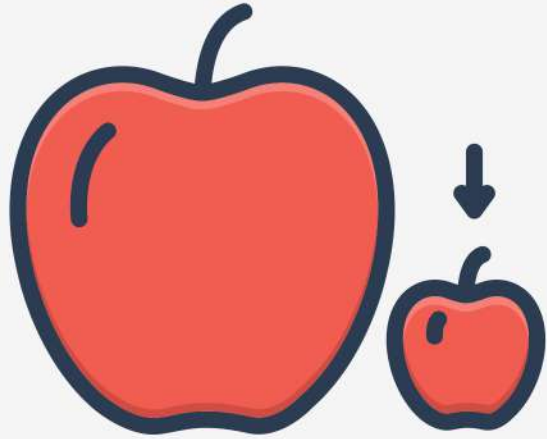


big

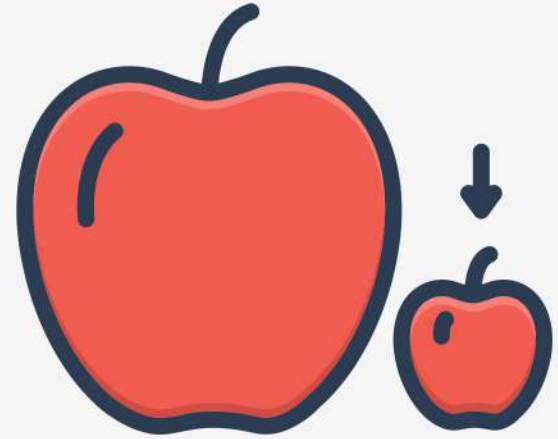


\_\_\_\_\_





\_\_\_\_\_



small